



# Evolution of the NL Registry Changing Naming Policies

AFNIC-SIDN Workshop

Paris 16 October 2003

Bart Boswinkel

Jaap Akkerhuis

ISOC ccTLD Workshop



# Contents

Background

Naming Policies

Growth domain names

Growth Registrar

Fee and Fee structure

Organizational consequences

Conclusions



# Background

Until 1996: Piet Beertema

Strict Registry-registrar model

SIDN incorporated 1996

Naming Policy

Legally: GT&C's

Separate set registrar and registrant

Liberalization gradual process



# Naming Policies for registration

First set: January 1997

Board decision November 1998

1 April 1999

15 November 2000

29 January 2003 (result Domain name debate)



# January 1997 (1)

## Technical requirements

- Working name server

- Technical requirements domain name

## Domain name requirements

- Not generic

- Not offensive



# January 1997 (2)

## Registrant requirement

One domain name

Resident Netherlands

Company or institution

Specific interest in Domain name (™ or other)

## Miscellaneous

Transferable

Registrar in EU

Change of registrar



# Board decision 1998

Registrant requirement

More domain names per registrant



# Naming Policy 1999

Technical requirements: No change

Domain name

Not generic, unless specific interest

Not offensive

Registrant

Resident in NL

Company





# Naming Policy 15 November 2000

Technical requirements: No change

Domain name

No restrictions

Registrant

residency in NL

Company or institution

Miscellaneous

Introduction Personal Domain names



# Naming Policy 2003

Technical requirements: No change

Domain name: no restrictions

Registrant: no restrictions

Miscellaneous

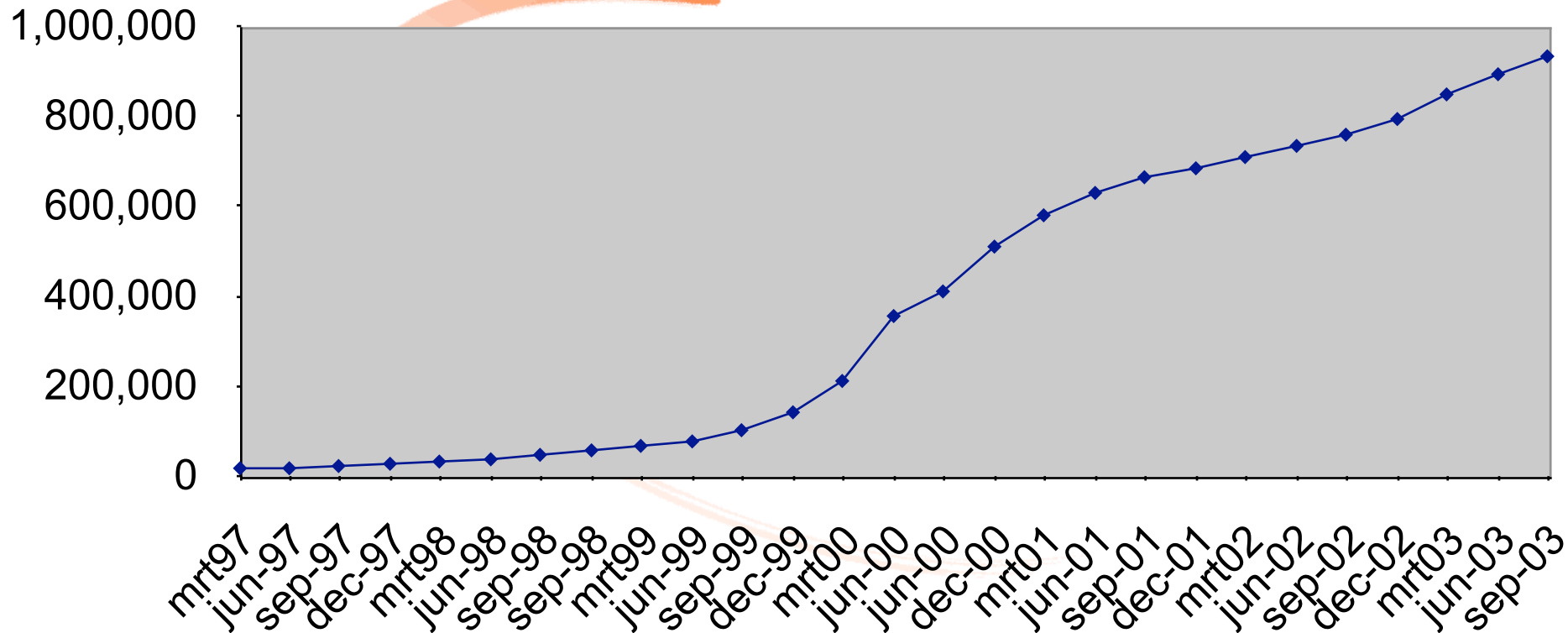
Introduction residency contact

Introduction ADR

Introduction Opt-out Whois

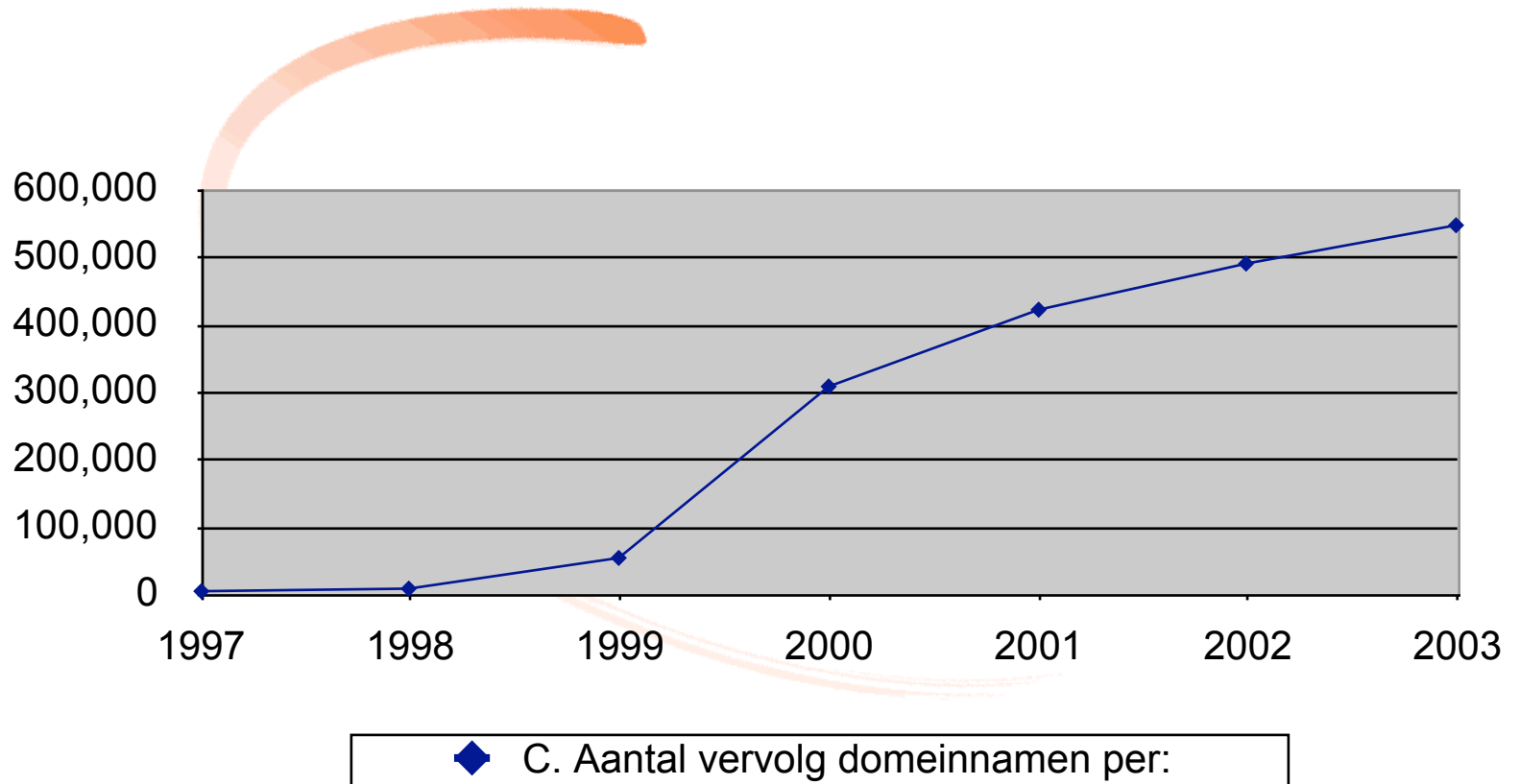


# Growth of the number of .nl domain names



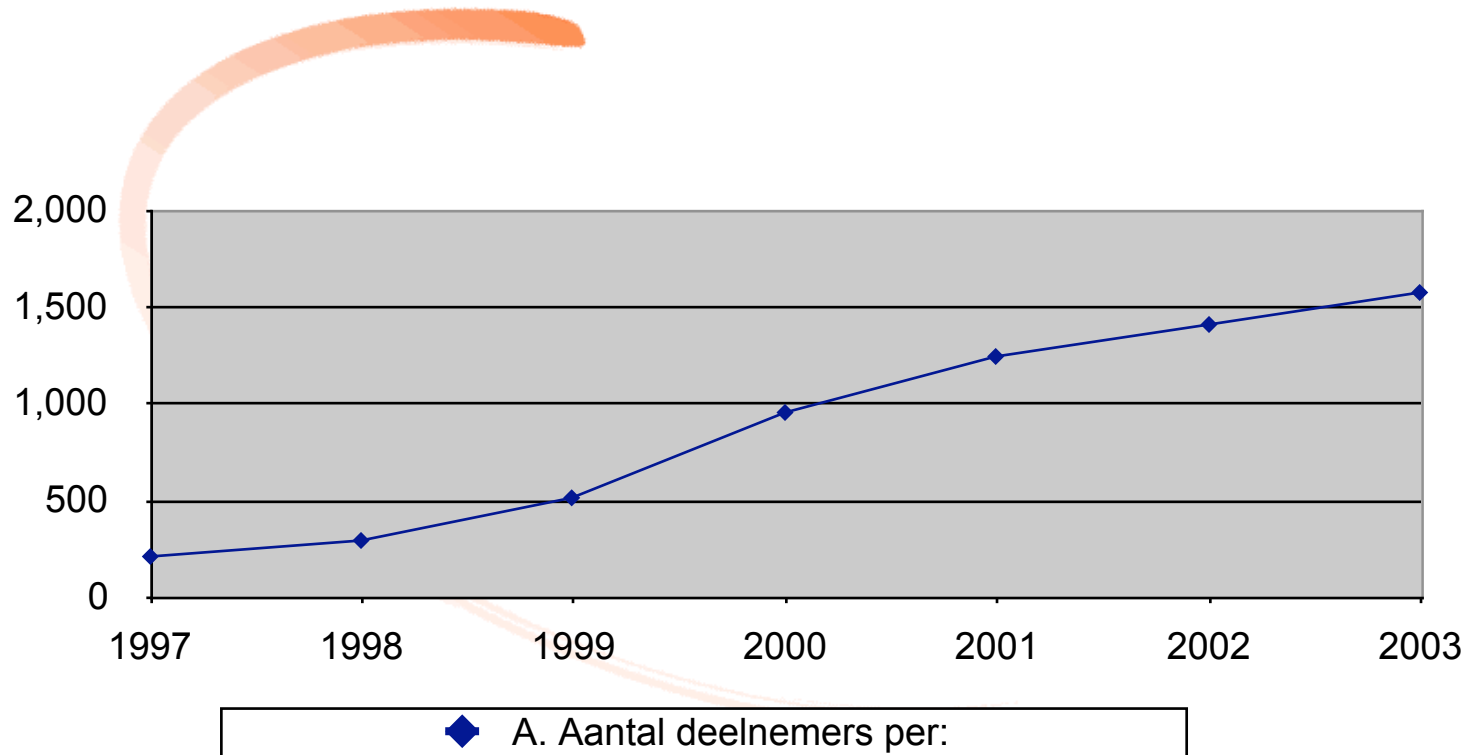


# Growth rates (2)





# Growth rate (3): registrars





# Fee and Fee structure

Invoicing Registrar:

Every quarter

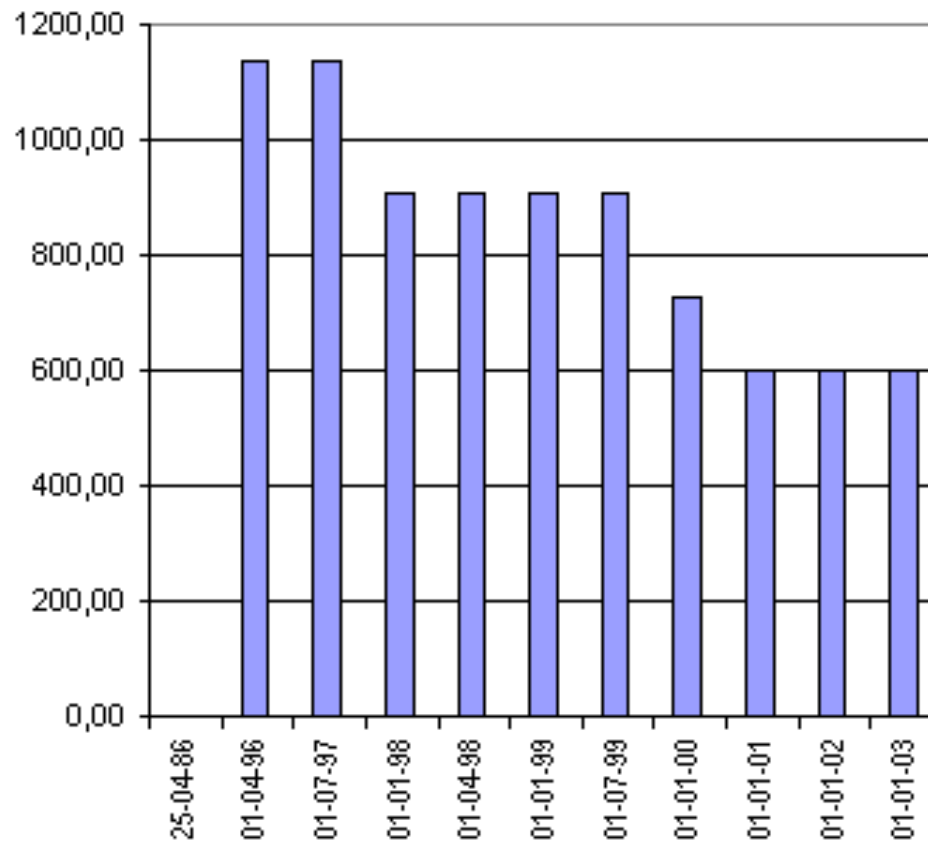
in advance on installed base

Registrar fee

Transaction fees and subscription charge

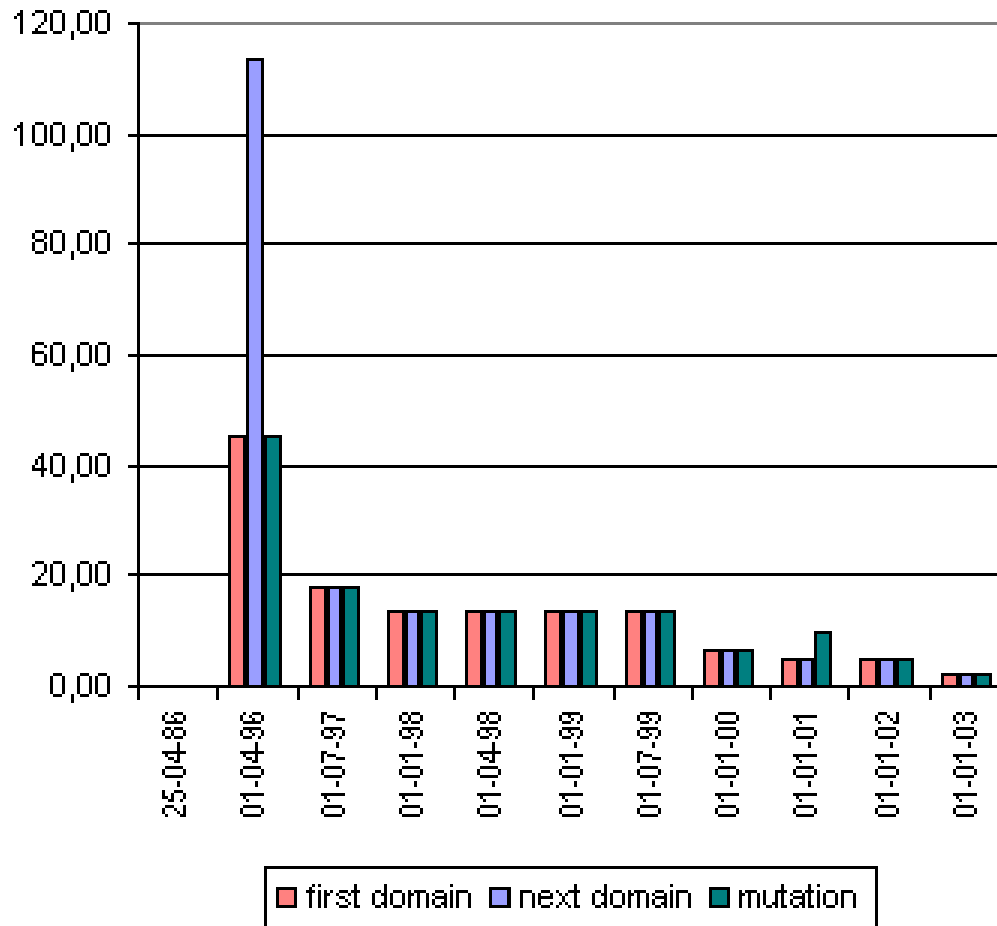


# Fee for category I participants [€ p.a.]





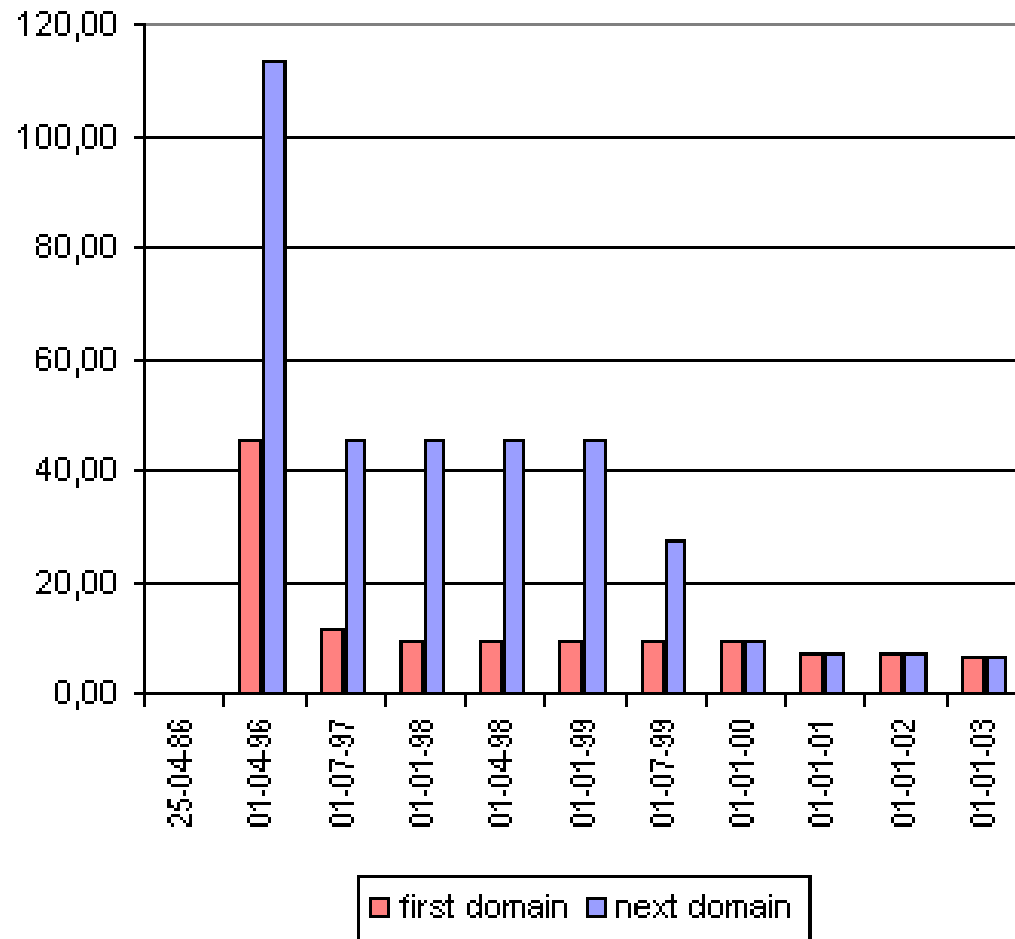
# Transaction fees [€ p.a.]







# Subscription charges [€ p.a.]





# Organizational Consequences

1997:

SIDN: Board ( 7 Volunteers)

Fully outsourced operation KEMA: 6 FTE

1999

SIDN: Board + 3 FTE

KEMA approx: 14 FTE

2000

SIDN: Board + 4 FTE

KEMA: 35 FTE

2002

SIDN: Board + 8 FTE

KEMA 20 FTE

2003

SIDN: Board + 25 FTE



# Conclusions

## Increased efficiency

- Automation of controls

- Automation of registration process

- Lower Fees

## Increased reliability, trustworthiness

## Main incentives growth

- No restriction on name

- More domain names per entity



# Further information

[www.sidn.nl](http://www.sidn.nl) (English version)

Ben Geerlings (Ben@SIDN.NL)

Communication manager



# Questions ???

